

WE
THINK
IN
LIGHT

LED LINEARTM
lighting solutions

Member of the
Fagerhult Group

"IT ONLY BECOMES A VISION ONCE IT EXCEEDS
THE IMAGINATION OF THE OTHERS."

David Tatuljan

VIS ION MISS ION

<< The aurora borealis (the northern lights, aurora borealis, as Southern Lights, Aurora australis) is a luminous phenomenon by excited nitrogen and oxygen atoms of the upper atmosphere (electric meteor), which is caused in polar regions by the impact of accelerated charged particles from the magnetosphere on the atmosphere.



VISION.

We want to be the leading manufacturer of innovative linear lighting solutions. We want to be perceived as the world's leading brand for linear lighting. We will achieve this through excellence in products, excellence in processes and excellence in application management.

Dr.-Ing. Michael Kramer
Managing Director

A handwritten signature in black ink, appearing to read 'M. Kramer'.

MISSION.

To create unique linear lighting products which add an appreciable value to the lives of our customers.

Dipl.-Kfm. Carsten Schaffarz
Managing Director

A handwritten signature in black ink, appearing to read 'C. Schaffarz'.



“WITHOUT PASSION THERE
IS NO GENIUS.”

Theodor Mommsen

« Bioluminescence (gr. Bios „life“ and lat. Lumen „light“) refers in biology to the ability of living organisms to produce light themselves or with the help of symbionts.



PA S S I O N

LIGHT IS OUR PASSION

Founded in May 2006, our enterprise supplies high quality linear LED lighting solutions based on flexible printed circuit boards worldwide. Our offer is a cost effective, unique modular LED tool kit for interior or exterior linear lighting solutions - from mood to general lighting - with an ingress protection of up to IP68.

Our international awards and reference projects, including exquisite lighting solutions for decorative or architectural applications, stand as proof of our high quality manufacturing philosophy.

With our LED products you can economically realize general lighting tasks. Based on this philosophy and the depth of our LED knowledge we are constantly working on improving products for your lighting requirements. Throughout

the following pages we invite you to familiarize yourself with the LED Linear™ world of Experience, Engagement, Innovation, Products, Trust, Excellence and Presence. We are happy to provide solutions with knowledge and passion.



EX PER IEN CE

2006

Foundation of LED Linear™ GmbH

2008

First international award for an innovative, high-quality luminaire: Next Generation Luminaire Contest, United States: Winner X00LUX™

2010

Development of a new encapsulation technology. Installation of the world's most advanced encapsulation machine for LED lights.

2007

Initiation of international sales partnerships

2011

- Industry Award 2011: Design Award of the Federal Republic of Germany in silver: Winner VarioLED™ Flex VENUS
- Opening new branch office in Asia, Singapore

2013

- Top 100 Innovator for 700% sales growth 2008 - 2012 and a general growth of 730%
- Implementation of automated packing machine
- Opening branches in the Middle East, US and India
- Expansion of production facilities in Duisburg for warehouse and luminaire construction

2014

- Implementation of automated CNC profile production line
- IF Design Award: Winner X00MINAIRE™
- Next Generation Luminaire Indoor Contest, United States: Winner X00LINE™

2012

- Opening new branches in France, Great Britain and Switzerland
- Relocation of the production site from Neukirchen-Vluyn to Duisburg and expansion of capacity
- Installation of an ultramodern fully automatic encapsulation machine with five meters production lengths. Significant capacity expansion.
- Red Dot Design Award: Winners VarioLED™ Flex VENUS, VarioLED™ OCEANOS and "Best-of-the-best" X00LUM™

2015

- Installation of the world's most advanced R2R production line for manufacturing flexible LED lines
- Installation of the new testing laboratories to measure photometric parameters and the environmental influences
- Red Dot Design Award: Winners VarioLED™ Flex AMOR, HYDRALUX™ and X00TUBE™ 38

2017


German Design Award 2017 for Fire Dance, HYDRALUX™ and X00MINAIRE™ 4292

2016

- German Design Award 2016 for outstanding product design
- Award "Brand of the Century" for "The lighting system"
- Awarded as "National Champion" at the European Business Awards
- German Brand Award 2016 for innovative brand management
- Fagerhult acquires LED Linear™

"ON EVERY PATH AWAIT EXPERIENCES THAT BRING
US CLOSER TO OUR GOAL."

Nicole Engelhardt

The background of the entire page is a dark, almost black, field filled with intricate, glowing orange and yellow patterns. These patterns consist of numerous overlapping, wavy, and intersecting lines that create a sense of depth and movement, resembling a complex network or a series of concentric, distorted waves. The lines are most concentrated in the center and spread out towards the edges, creating a symmetrical, mandala-like appearance. The overall effect is one of dynamic energy and complexity.

“COMMITMENT MEANS TO NOT RECEIVE
ANYTHING AND STILL DO THINGS AS IF YOU
WOULD GET RICH THROUGH THEM!”

David Tatuljan

LED LINEAR AS A SHINING EXAMPLE: THE FIRST ENDOWED PROFESSORSHIP AT THE UNIVERSITY OF WISMAR.

LED Linear™ has been closely connected to the University of Wismar for many years. An important milestone has been set on 9th July 2015: the agreement on the establishment and financing of the first endowed professorship was officially signed. Thus, LED Linear™ builds a bridge between business and science.

With regard to the availability of expertise many paths are taken to bring professionals to the University of Wismar. With the conclusion of the contract for the endowed professorship an essential contribution is being done to strengthen the degree program in Architectural Lighting Design – especially in application design. The professorship should be known as “The Endowed Professorship for Lighting Applications in Architecture (Lighting Application in Architecture)”, which is a valence state 2 professorship and is initially limited to five years. LED Linear™, as the establishing endower provides the University of Wismar a six digit amount for partial funding of the staff costs of the professorship.

CEO Dr. Michael Kramer emphasizes: “For us it is especially important to make a significant contribution to the advancement of research in the field of lighting design.”

**“THE TARGETED SUPPORT AND
TRAINING OF HIGHLY QUALIFIED
YOUNG PEOPLE IS EXTREMELY
IMPORTANT TO US.”**

DR.-ING. MICHAEL KRAMER

The activities of the professorship correspond to the usual list of tasks and include lecturing and the responsibility for modules in the degree programs of the University of Wismar, participation in academic self-administration, the supervision of thesis and other tasks in the context of studies. In particular the exploration of new fields of application of light in buildings, for example, based on linear LED lighting systems, as well as from an economic point of view and the development of new approaches to product and application designs in the field of linear LED products are in focus.



LED Linear™ CEO Dr.-Ing. Michael Kramer, and the principal of the University of Wismar, Prof. Dr. jur. Bodo Wiegand-Hoffmeister, ceremonially signed the contract and unanimously declared that this endowed professorship is a favourable step for both, the completion of teaching activities as well as the expansion of the marketable LED application spectrum.

LED Linear™ is also cooperating with the University Duisburg-Essen, the University Rhine Waal and with the Fontys International Business School, Venlo.

EN GAG EM ENT

INN OV ATI ON

"INNOVATIONS ARE
NOT MARKET-DRIVEN,
THEY DRIVE THE MARKET."

Josef Brauner

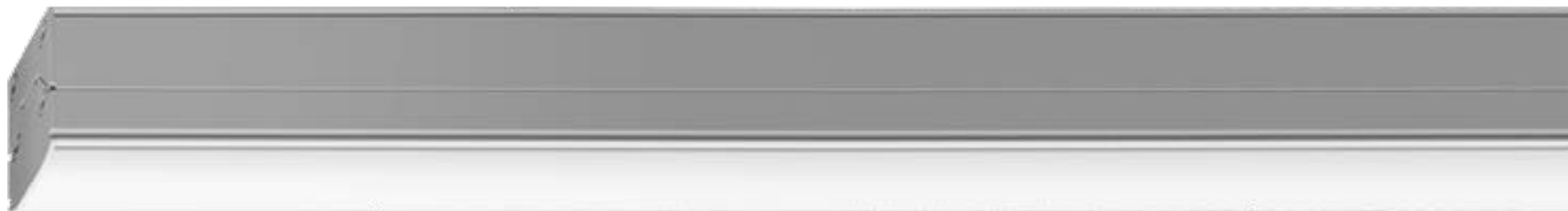
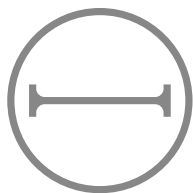


INNOVATION.
MODULARITY.
CONSEQUENCE.

LED Linear™ develops and produces high quality linear LED lighting systems and has realized a consistent innovation management of a modular tool kit. Today more than 20 million individual lighting solutions can be offered. For each customer, tailor made lighting solutions can be realized.

Our innovation is based on the continuous renewal of products and processes, creative system solutions for the customer and the broad potential of LED lighting technology. Innovations determine our business success, and provide answers to many challenges of our time. In LED lighting technology, we are constantly seeking for new solutions that save resources and protect our natural foundations of life at the same time. It is always our goal to make the everyday life of the individual and social life easier, safer and more comfortable and to contribute to a better world for present and future generations.





LINEAR – ALL ALONG THE LINE

Linear stands for continuous, shadow-free illumination. Linear luminaires create worlds of experience - both in the outdoor area as well as in interior design. Linear light has become indispensable in all areas of life. It increases the quality of life in cities, makes intelligent factories more efficient, it strengthens well-being

and productivity in the office and in education, it increases guest comfort in the hospitality industry and creates new shopping experiences in shopping areas.

Linear light - an indispensable part of lighting design!

>> Linearity has a different meaning in different areas, but usually describes a rectilinear nature.

L I N E A R

MO

D

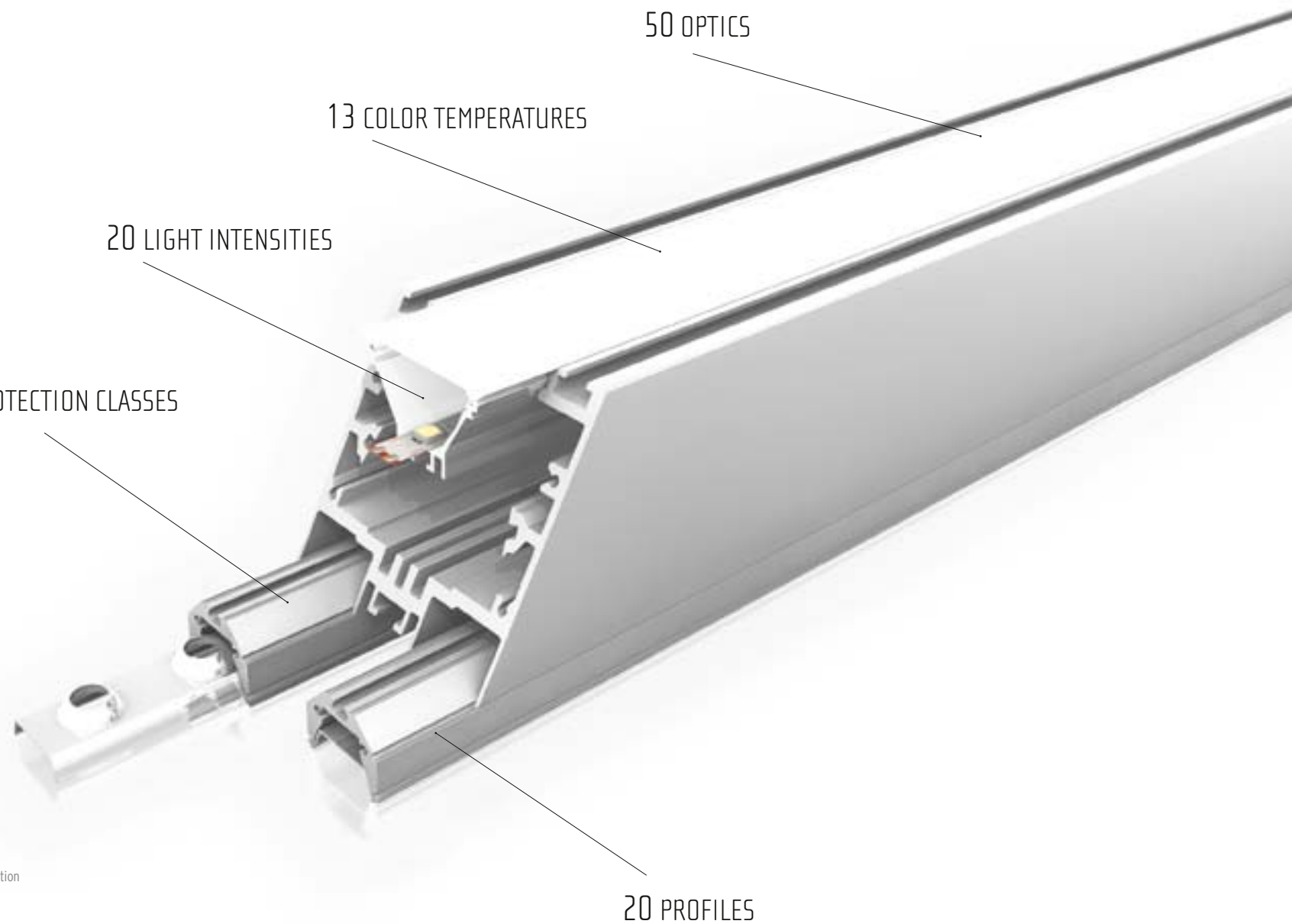
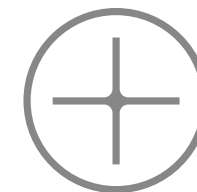
UL

A

R

MODULAR – AS DESIRED

Modular stands for versatile combinations. Our product portfolio is based on a modular construction toolkit. Configure your individual lighting solution according to your wishes. You select: mounting type, protection grade, color rendition, color temperature, luminosity, wattage, optic and profile - we offer your desired product!



<< Modularity is the division of a whole into parts as modules, called components, elements or building blocks. In suitable form and function they can be joined together or interact with each other through appropriate interfaces.



INFINITE – FREEDOM OF DESIGN

You can look forward to more than 20 million standard variations, which will leave nothing to desire for your lighting task. Whether you would like to provide contour lighting for a 300 meter high facade, illuminate a waterscape, equip

an office complex with efficient light, or create mood light in the private sector - we inspire your imagination!

>> The term infinity denotes the negation or cancellation of finitude.

I INFINITE



OUR CUSTOMERS

Our customers are the start and end point of all our actions. We want to provide our customers with unique products to improve their quality of life (lighting for life) and with perceptible added value (value added lighting). Our product price-performance ratio for our current and future customers is the focus of our product development. In dealing with our customers we are authentic, clear, precise and definite.

OUR EMPLOYEES

Our employees are the foundation of our success. We expect our employees to identify strongly with our vision, mission, our business purpose and our goals. Our employees should distinguish themselves through humor, initiative which radiates to others, constructive joyful will, sense of community, looking forward to the future, a positive attitude to the diversity of life and a loving attitude towards people and cultures. We learn from mistakes and take them as an opportunity for continuous improvement. For high performance and successful work, we offer challenging tasks, training opportunities and adequate remuneration.

OUR COMPANY

Our company is characterized by genuinely global and cultural diversity. We have employees, customers and partners in almost every continent. Together we form a unique network. It is characterized by the exchange of knowledge, intercultural cooperation and individual development opportunities. As a global company and local citizen we maintain an intense social dialogue. We gain ideas and insights, and we encourage understanding and trust. Particularly important to us is the promotion of education and science. We are in close contact with relevant universities and colleges in the world.

OUR SUPPLIERS

Our suppliers are important partners in innovation. With them we want to maintain long-term relationships based on trust and mutual success. With selected suppliers we want to form strategic partnerships to strengthen our competitive position and create lasting value for our customers.

OUR COMPETITORS

We respect our competitors and welcome any comparison of our products. In the competition, we want to exist due to better and unique products. If necessary, we will cooperate with our competitors.

OUR PRODUCTS

Our products should contribute demonstrably to an increased quality of life while conserving the scarce resources of our environment. Our products convince with easy specification and application, outstanding performance, easy installation, maintenance and resource-friendly disposal at end of life. Our products contribute to saving energy and scarce resources through high efficiency and long service lifetime.



>> In the field of optics a prism is understood to be a component in the form of the geometrical body of the same name, which is used for different optical effects e.g. as a dispersive element or for deflection of a light beam.

RES PONS IBIL ITY



"WE ARE MADE WISE NOT BY THE RECOLLECTION
OF OUR PAST, BUT BY THE RESPONSIBILITY
FOR OUR FUTURE."

George Bernard Shaw

PR ES EN CE



“QUALITY REQUIRES PERMANENT PRESENCE, NO MATTER WHAT ANYONE DOES.”

Elmar von Lukowicz

N 51°25'55.848"
E 6°32'44.772"

PRESENCE – CLOSE TO THE CUSTOMER

Our customers are important to us. That's why our product range does not end with light fixtures and accessories. We offer customized LED tapes from a total length of 5,000 m upwards. Please ask us! Our partners around the world will help you with passion to develop a linear lighting solution for your application.

LED Linear™ (Asia) Pte Ltd
Singapore

LED Linear™ Australia
Balwyn North

LED Linear™ Canada
Toronto

LED Linear™ France SARL
Horbourengh Wihr

LED Linear™ India Pvt. Ltd
New Delhi

LED Linear™ Middle East FZC
Ras Al Khaimah

LED Linear™ Netherlands
Schiedam

LED Linear™ Schweiz GmbH
Sirnach

LED Linear™ Spain
Barcelona

LED Linear™ UK Ltd
Hertfordshire

LED Linear™ USA, Inc.
Niagara Falls

80% EXPORT BUSINESS

65% GROWTH PER YEAR

155 STAFF

9 BRANCHES WORLDWIDE

87 DISTRIBUTORS WORLDWIDE

MADE IN GERMANY

“WINNERS DON'T LOOK FOR EXCUSES,
THEY FIND SOLUTIONS.”

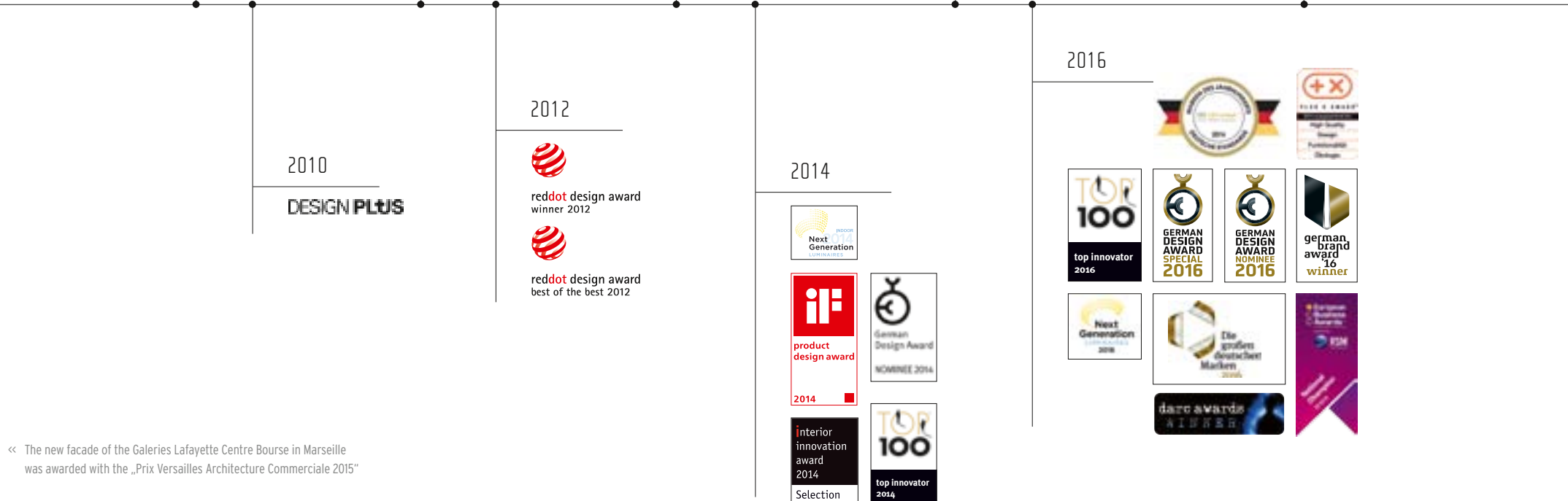
Reinhard Fondermann



EX
CEL
LE
NT

10 YEARS OF EXCELLENCE

Our numerous national and international awards are a guarantee of our philosophy of quality, our design and our claim to create innovative lighting solutions that offer added value to our customers.



« The new facade of the Galeries Lafayette Centre Bourse in Marseille was awarded with the „Prix Versailles Architecture Commerciale 2015“ »



TR U ST

"CONFIDENCE IS THE RESULT OF SYMPATHY AND
OPTIMISM."

Reinhard Fondermann

UNIQUE PRODUCTS AND SERVICES – DESIGNED WITH QUALITY AND PASSION

As a globally acting lighting manufacturer, we are exemplary in innovation, design and quality with our modular linear LED tool kit. In the eleventh year of our existence we generate high double-digit growth rates as a medium-sized company. Delivering high quality and reliable products is what we demand from ourselves. Our customers benefit from this. We always use quality components in our products. The high quality standard is ensured through systematic quality assurance measures and a guarantee of up to 7 years. As part of the development process, every luminaire has to pass various tests in our own lighting laboratory. Photometric measurements, EMC testing (Electromagnetic compatibility), thermal measurements, etc. are part of our quality standards. Long term measurements validate the previously simulated results and confirm light intensities and luminance levels relevant for your

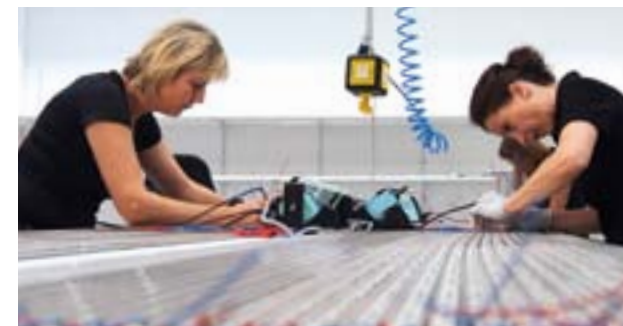
application. In addition, normative aspects are checked and optimization potentials identified as part of a continuous improvement process to further expand our innovation leadership.

**“LIGHT IS OUR PASSION.
DELIVERING HIGH QUALITY AND
RELIABLE PRODUCTS IS WHAT WE
DEMAND FROM OURSELVES.”**

DR.-ING. MICHAEL KRAMER



Most LED Linear™ products are safety checked by Intertek. Our production site is audited quarterly by Intertek.



OUTDOOR



HOSPITALITY



INDUSTRIAL



OFFICE + EDUCATIONAL INSTITUTIONS



18



19



20



21



22



23



24



25



27



26

RESIDENTIAL



28



29



30



31



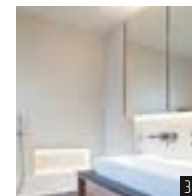
32



33



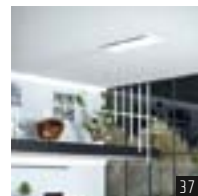
34



35



36



37



38



39

SHOP + RETAIL



40



41



42



43



44



45



46



47



48

ARCHITECTURAL + FACADE



49



50



51



52



53



54

ART + CULTURE



55



56



57



58



59



60



61

SPA + WELLNESS



62



63

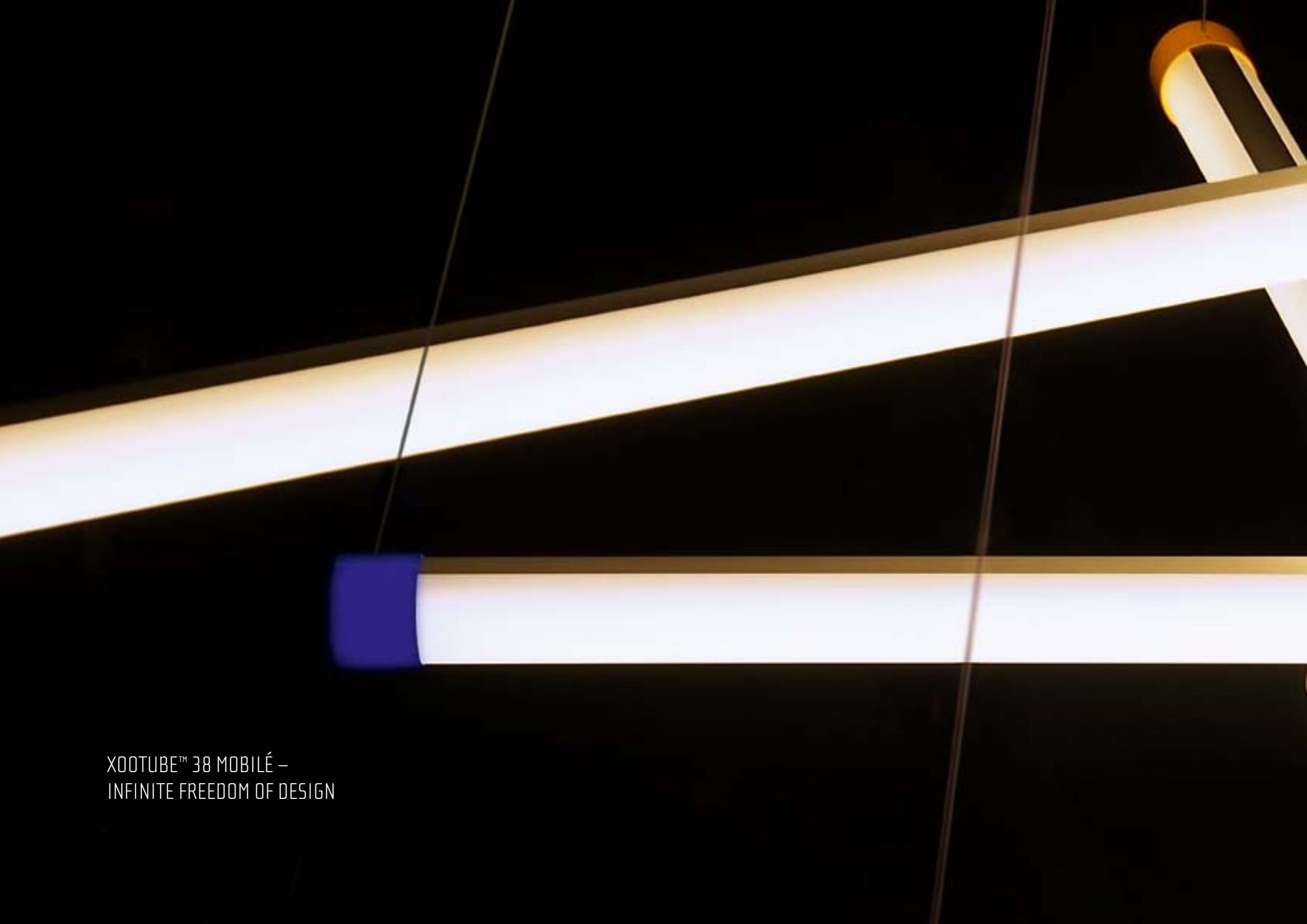


64



65

PICTURE CREDITS: p. 4: shutterstock.com/solberg p. 6: shutterstock.com/H. Tanaka p. 7 photo top: Ludovic Loewert photo 1 right: Alex Haw photo 2 right: Chris Orange photo 3 right: Jennifer Braun p. 9: shutterstock.com/ssguy p. 10: shutterstock.com/ags-andrew p. 11: Hochschule Wismar p. 12: shutterstock.com/Willyam Bradberry p. 21: shutterstock.com/magnetix p. 24: François Moura p. 28-31 : photo 2: Acende Lichtgestaltung, photo 4: Ludovic Loewert photo 6: Aphoto photo 8: Miquel Coll Photo 9: Studio Twilight photo 10+12: Daniel Kessler photo 11: BMLD photo 13: Fernando Alda photo 16: shutterstock.com/Vladimir Melnik photo 19+24: KKS Strategy LLP/Timothy Soar, photo 20: Andrew Worssam photo 21: Luke Hayes photo 22: shutterstock.com/Rade Kovac photo 23+26: Luke Hayes photo 25: Uzi Porat photo 27: list lichtdesign, Peter List photo 28+30+31+34+35: Daniel Kessler photo 29: Chris Orange photo 38: Aphoto photo 39: Julian Abrams photo 40: shutterstock.com/Zhu Difeng photo 46: Alejo Baqué photo 47: shutterstock.com/Fipphoto photo 48: shutterstock.com/Adisa photo 49: Adam Mørk photo 50: Max Smolyar photo 52: Andrew Worssam photo 53: Lane Barden photo 54: Brice Schneider photo 55: Luke Hayes photo 56: Alex Haw photo 57+61: Alex Trylski Photography and Tom Niven photo 58: Uli Deck photo 59: Nelson Leong Technolite photo 60: Jennifer Braun photo 63: Aphoto photo 64: Contagious Agency photo 65: Hilton Hotels & Resorts

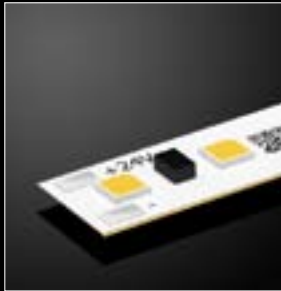


XOOTUBE™ 38 MOBILÉ –
INFINITE FREEDOM OF DESIGN



WE OFFER THE BEST PORTFOLIO OF LINEAR LED LIGHTING SOLUTIONS

VarioLED™ Flex IP00



The new standard
of light

- Flexible linear LED Light lines
- Cross section: 9.5 mm x 2.1 mm
- Length: 2,000 mm - 10,000 mm
- Power: 3 W/m - 42 W/m
- Luminous flux: 280 lm/m - 5,260 lm/m
- Most efficient LED Flex portfolio in CV operation with up to 163 lm/W
- Optimal heat dissipation thanks to the flexible printed circuit board LED Linear™ Tj-Away Technology®
- Free scalable from the reel

VarioLED™ Flex IP67



High protection and
amazing flexibility

- Flexible linear LED light lines in IP67
- Cross section: 12.5 mm x 3.8 mm
- Length: 125 mm - 10,000 mm
- Power: 3 W/m - 15 W/m
- Luminous flux: 230 lm/m - 1,900 lm/m
- Minimum bending radius of 30 mm
- IP67 protected against water, salt water and UV radiation through a clear polyurethane encapsulation
- Ready to plug in and in customized lengths

VarioLED™ IP67



High protection and
optimum heat dissipation

- Fully encapsulated LED linear light lines in aluminium profiles in IP67
- Cross section: 20 mm x 13.8 mm or 20 mm x 19.7 mm
- Length: 125 mm - 4,000 mm
- Power: 3 W/m - 25 W/m
- Luminous flux: 220 lm/m - 2,900 lm/m
- IP67 protected against water, salt water and UV radiation through a clear polyurethane encapsulation
- Ready to plug (IP67), customized lengths and easy installation
- Profile with excellent heat dissipation allows the use of powerful LEDs

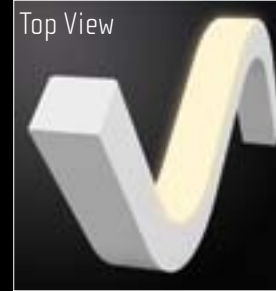
HYDRALUX™ IP67



Small, field cuttable and with
infinite freedom of design

- Flexible linear LED light lines in IP67
- Cross section: 12.5 mm x 3.5 mm
- Length: 2,000 mm - 10,000 mm
- Power: 3 W/m - 15 W/m
- Luminous flux: 230 lm/m - 1,880 lm/m
- Field cuttable on site
- IP67 protected against water and UV radiation through a clear polyurethane casting
- With high-quality look and feel

VarioLED™ Flex
VENUS/PHOBOS/
SKYLLA/NIKE IP67



Flexible, dot-free design light line
for appealing lighting accents

- Top View (TV): Cross section of 15.0 mm x 16.0 mm and bending direction vertically
- Length: 213.5 mm - 5,026 mm
- Power: 6 W/m - 15 W/m
- Luminous flux: 290 lm/m - 1,330 lm/m
- Dot free and absolutely homogeneous light emission surface
- Flexibility combined with high durability: IP67 protected against water, salt water and UV radiation by an opal Polyurethane encapsulation
- Bending radius of 15 cm

VarioLED™ Flex
VENUS/PHOBOS/
SKYLLA/NIKE IP67



Flexible, dot-free design light line
for appealing lighting accents

- Side View (SV): Cross section of 20.5 mm x 10.0 mm and bending direction horizontally
- Length: 227.5 mm - 5,040 mm
- Power: 6 W/m - 15 W/m
- Luminous flux: 170 lm/m - 770 lm/m
- Dot free and absolutely homogeneous light emission surface
- Flexibility combined with high durability: IP67 protected against water, salt water and UV radiation by an opal Polyurethane encapsulation
- Bending radius of 15 cm

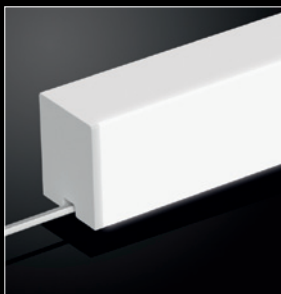
VarioLED™ Flex AMOR
IP67



Miniaturized, flexible LED light
line for decorative lighting

- Cross section: 5 mm x 13 mm and bending direction horizontally (Side View)
- Length: 391 mm - 5,016 mm
- Power: 8 W/m
- Luminous flux: 270 lm/m
- Dot free and absolutely homogeneous light emission surface
- Maximum flexibility with minimum cross-section
- IP67 protected against water, salt water and UV radiation by an opal polyurethane encapsulation
- Bending radius of only 3 cm

ADONIS IP67



Impresses with light intensity and unrivaled homogeneous light emission surface

Opal encapsulated linear LED luminaire

- Cross section: 20.5 mm x 25.5 mm
- 5 standard lengths: 639 mm, 951.5 mm, 1,264 mm, 1,514 mm, 1,826.5 mm
- Power: 6 W/m - 25 W/m
- Luminous flux: 220 lm/m - 1,620 lm/m
- Small form factor and high performance linear light bar
- Dot free and absolutely homogeneous light emission surface
- IP67 protected against water, salt water and UV radiation by an opal polyurethane encapsulation and IK10 checked (impact resistance)

KALYPSO IP67



Convinces with light intensity and unmatched precise light control

Encapsulated linear LED luminaire with linear lenses

- Cross section: 20.5 mm x 25.5 mm
- 5 standard lengths: 639 mm, 951.5 mm, 1,264 mm, 1,514 mm, 1,826.5 mm
- Power: 6 W/m - 36 W/m
- Luminous flux: 330 lm/m - 3,580 lm/m
- Allows the use of 3 precise and highly efficient linear optics (10° Wall grazing, 30° and 60° general lighting optics)
- IP67 protected against water, salt water and UV radiation by an clear polyurethane encapsulation and IK10 certified (impact resistance)
- Maximum grazing light performance

VarioLED™ POSEIDON IP67

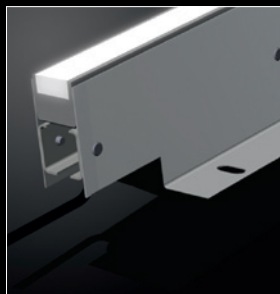


The robust lighting solution for outdoor applications

Fully encapsulated linear LED luminaire in white powder coated aluminum profile in IP67

- Cross section: 90 mm x 30 mm
- 2 standard lengths: 387 mm, 1,012 mm
- Power: 22 W/m - 25 W/m
- Luminous flux: up to 1,620 lm/m
- Dot-free and absolutely homogeneous light emission surface
- Robust and vandal-resistant luminaire: Tested for shock resistance and certified with IK10
- IP67 protected against water, salt water and UV radiation by an opal polyurethane encapsulation

VarioLED™ OCEANOS IP67/IP68



Soft light and endless light lines lead the way

Fully encapsulated linear LED inground luminaire made from stainless steel in IP67/IP68

- Cross section: 30 mm x 30 mm
- 2 standard lengths: 510 mm, 1,010 mm
- Power: 10 W/m - 12 W/m
- Luminous flux: up to 210 lm/m
- To be walked on and traversed by vehicles up to a load of 30 kN
- Resistant stainless steel housing in the versions V2A / V4A
- Dot-free and absolutely homogeneous light emission surface through an opal polyurethane encapsulation

XOOLINE™ IP40/IP67



Setting accents with soft light curves or precise light direction

Modular linear LED luminaire with minimum dimensions

- Cross section: 19.5 mm x 22.5 mm
- 4 standard lengths: 380 mm, 630 mm, 1,255 mm, 1,880 mm
- Power: 5 W/m - 42 W/m
- Luminous flux: 380 lm/m - 5,000 lm/m
- 12 different optics (diffuser optics and linear lenses)
- No visible light gap between the luminaires through lateral cable routing and transparent end caps

VESTA IP40

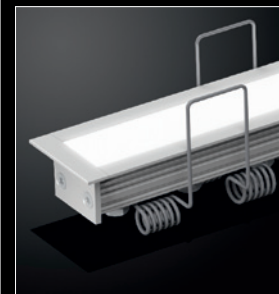


The smart lighting solution for good light on work spaces

Linear LED under cabinet luminaire

- Cross section: 26.5 mm x 29 mm
- Length: up to 4,010 mm
- Power: 3 W/m - 25 W/m
- Luminous flux: 260 lm/m - 3,420 lm/m
- 30° or 60° angled luminaire profile
- Perfect, specially developed lighting solution for work spaces
- Mounting profile perfect for base cabinets and corners
- 6 diffuser optics

LUNA IP40



Discreet and elegant - the lighting solution for recessed applications

Linear LED recessed luminaire

- Cross section: 32 mm x 17.5 mm
- Length: up to 4,010 mm
- Power: 3 W/m - 42 W/m
- Luminous flux: 260 lm/m - 5,000 lm/m
- Easy, tool-free installation with mounting springs
- Very small installation depth of only 25 mm
- With 12 optics suitable for many different recessed applications

LYRA IP40



Perfectly shaped and stylish lighting solution

Linear LED luminaire in a round aluminum profile

- Diameter: 20 mm
- Length: up to 4,010 mm
- Power: 3 W/m - 25 W/m
- Luminous flux: 250 lm/m - 3,240 lm/m
- 360° adjustable for optimum directional light
- With linear lenses for precise illumination or diffuser optics for decorative lighting
- Allows a wide range of new applications

XOOLUM™ IP20/IP40/IP67



The smallest and brightest lighting solutions for general illumination

Modular, linear LED luminaire with 45° adjustable luminaire head

- Cross section: 25,4 mm x 31 mm
- Length: 73 mm - 3,948 mm
- Power: 5 W/m - 42 W/m
- Luminous flux: 330 lm/m - 4,130 lm/m
- 3 installation types (cove, pendant, surface-mounted)
- 7 different optics: 3 diffuser optics, 3 reflector optics and an IP67 solution with opal encapsulation
- Specially developed, highly efficient reflector optics 25°, 65° and wall washer with an optical efficiency of up to 94%

MARS IP20

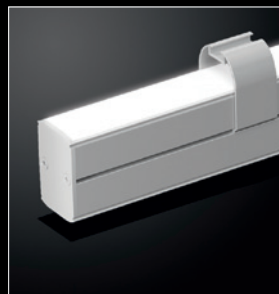


The linear revolution of downlights

Linear, modular LED recessed luminaire

- Cross section: 41.5 mm x 33 mm
- Length: up to 4,000 mm
- Power: 5 W/m - 54 W/m
- Luminous flux: 370 lm/m - 7,320 lm/m
- Available as freely configurable CV (constant voltage) variant as well as CC (constant current) variant incl. PSU
- Optimum glare control through a black matte finish (Black Glare Reduction)
- UGR glare rating of UGR < 13

XOOTOO IP20/IP40



The smallest two flame direct/indirect luminaire

Linear LED pendant luminaire with direct / indirect emission characteristics

- Cross section: 25 mm x 38 mm
- Length: up to 4,010 mm
- Power: 10 W/m - 50 W/m
- Luminous flux: 550 lm/m - 5,700 lm/m
- Two flame (direct + indirect) linear luminaire in smallest dimensions
- High quality diffuser and reflector optics
- For applications from ambient to task lighting the direct and indirect lamp are freely configurable

XOOLUX™ IP54



Fascinating illumination effects from wall grazing to wall washing

Linear LED luminaire with precise secondary lenses

- Cross section: 40 mm x 23.4 mm
- 4 standard lengths: 241 mm, 440.5 mm, 839.5 mm, 1,238.5 mm
- Power: 18.5 W/m - 49.2 W/m
- Luminous flux: 962 lm/m - 3,097 lm/m
- 6 different beam angles for applications of wall strips or wallwashing enable perfect illumination of different structured surfaces and bring them to advantage
- Adjustable luminaire housing of up to +/- 30° in both directions

XOOLIGHT™ IP40/IP67



Excellent balance between design and functional lighting

Linear LED design luminaire

- Cross section: 42 mm x 62 mm
- Length: 83.5 mm - 4,021 mm
- Power: 6 W/m - 49.2 W/m
- Luminous flux: 350 lm/m - 3,790 lm/m
- 3 mounting options: pendant, surface-mounted, recessed
- 9 different optics allow lighting design freedom
- Designed for general lighting: from office workplace to hospitality

XOOTUBE™ 38 IP40



Iconic form factor for smart accents in lighting design

Linear LED pendant luminaire in a round, opal PMMA housing

- Diameter: 38 mm
- 5 standard lengths: 800 mm, 1,050 mm, 1,300 mm, 1,550 mm, 1,800 mm
- Power: 15 W/m - 25 W/m
- Luminous flux: 900 lm/m - 2,520 lm/m
- 360° beam angle
- 10 different colored end caps
- Absolutely homogeneous light
- Reduced and iconic form factor for smart accents in lighting design

XOOMINAIRE™ – OUR DESIGN LUMINAIRE FAMILY FOR GENERAL LIGHTING

XOOMINAIRE™
4242



XOOMINAIRE™ 4242 is a compact design luminaire with a square form factor and integrated or external PSU. With its clear language of form and the enormous modularity the 4242 is the entry point to the XOOMINAIRE™ family.

XOOMINAIRE™
4262



The XOOMINAIRE™ 4262 is a pleasing design luminaire, which particularly offers itself as surface mounted version or pendant version. By aesthetics and function, the 4262 fits into any room concept and in almost any lighting concept.

XOOMINAIRE™
4262R



XOOMINAIRE™ 4262R (recessed) convinces as recessed variant. An absolutely flush installation of the luminaire is granted through the mounting brackets at the side of the 4262R.

XOOMINAIRE™
4292



The 4292 is designed as a pendant luminaire but it is also possible to use it as a wall-mounted version. With the pendant version, it is possible to use two lamps in the fixture. One lamp for direct and another for indirect. A homogeneous illumination of the ceiling is thus made easy.

XOOMINAIRE™
7066



The innovative luminaire with the form factor of 7066 stands out as the most modular family member. With this luminaire it is possible to install up to 3 flames in the fixture. 2 flames for direct illumination and one lamp for indirect illumination.

XOOMINAIRE™
9999



One luminaire, two possibilities: XOOMINAIRE™ 9999 is available as stand-alone luminaire or component luminaire of a continuous row system. The continuous row system offers the user the possibility of integrated and ready to plug in through-wiring.

XOONARIS™
2552



The very narrow and functional luminaire XOONARIS™ 2552 impresses with its exceptional and slim design along with the integration of a PSU. Filigree lines along the side of the profile make the 2552 something special within the luminaire family.

XOOLUM™
2530



With the smallest form it also belongs to the XOOMINAIRE™ family and is available as a surface mounted and pendant version. The luminaire head of the multi-part profile system is lockable at 45° in both directions.



LED Linear™ GmbH
Pascalstraße 9
47506 Neukirchen-Vluyn
Germany
Phone +49 2845 98462-0
Fax +49 2845 98462-120
Germany@led-linear.com

