

XOO COVE

The tool free cove solution

THIRTY BROADWICK



LED LINEAR™
lighting solutions

Member of the
Fagerhult Group

XOOCOVE

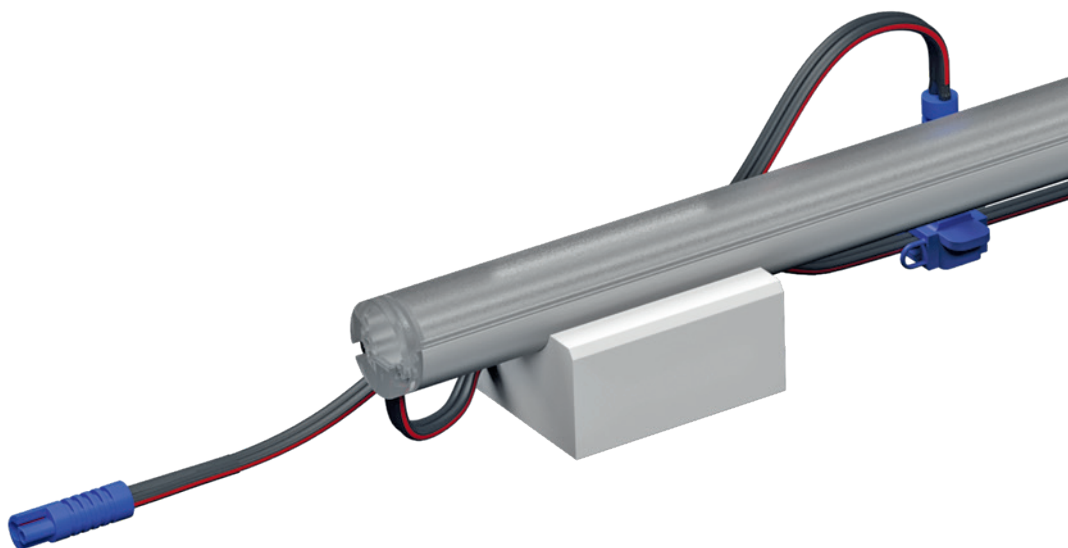
TAILORED FOR COVE LIGHTING

- Cove lighting gives corridors, halls and rooms a soothing atmosphere through indirect light. Long, continuum, homogeneous light lines are the most crucial factors for an uniform cove illumination. XOOCOVE serves it all.
- Easy installation is the key for cove applications. XOOCOVE uses a unique silicone pad, simply placed in the cove without the requirement of tools. Mounting clips increase the installation possibilities. Cabling is simplified by connectors, which can be pierced everywhere on the main 24 V cable. This allows a connection of multiple fixtures with only one cable.
- XOOCOVE offers a homogeneous light distribution through translucent endcaps. An output up to 3,240 lm/m (987 lm/ft) and a color temperature (CCT) ranging between 2,000 K to 5,000 K. The beam angle is adjustable in 360°. Easy installation and high efficiency makes XOOCOVE a cost efficient luminaire.

KEY FEATURES

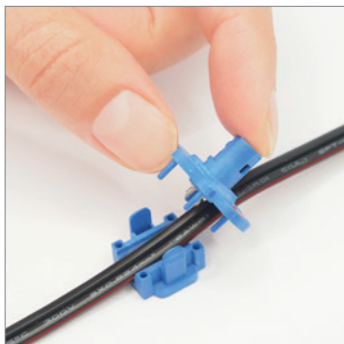
TOOL FREE

Due to space limitations in cove applications, an installation process requiring a minimal amount of tools is important. The silicone pad is simply placed in the cove, followed by the fixture. This enables an installation where the luminaire can be rotated in 360°. The installation process being tool free makes XOO COVE easy to install therefore reducing workmanship for installation.

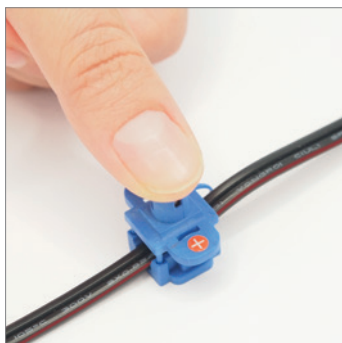


KEY FEATURES

QUICK CABLING



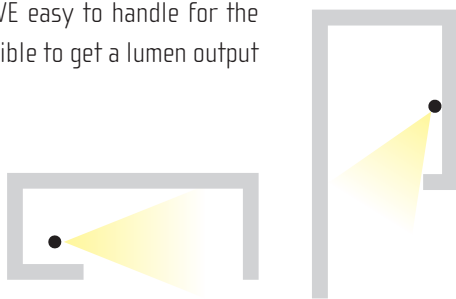
A piercing connector enables installation where multiple luminaires are attached to one 24 V bus cable. The connector easily pierces the cable, providing electrical supply to the luminaire.



KEY FEATURES

FORM FACTOR

With a diameter of 20 mm (0.79") only, X00COVE is easily integrated in most cove applications. The small form factor makes X00COVE easy to handle for the installer but it is still possible to get a lumen output of 3,240 lm/m (987 lm/ft).



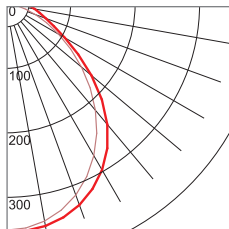
OPTICS

XOOCOVE is configurable with a diffuse cover or lens, suitable for different applications. The diffuse cover emits a homogeneous and dot free light. It suits general cove applications where an accent light is needed. The 60° lens is to be utilized for wall flooding. Translucent endcaps increase cove homogeneity by prohibiting light gaps and dark spots.

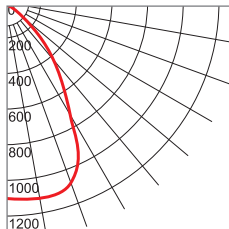
Diffuse round cover



Light distribution



Linear lens



TECHNICAL DATA

- Lumen output from 360 lm/m to 3,240 lm/m (110 lm/ft to 987 lm/ft)
- Color temperature ranging between 2,000 K and 5,000 K
- CRI up to 95
- Efficiency up to 133 lm/W
- IP40
- Lifetime 60,000 h L90/B10
- Available in White

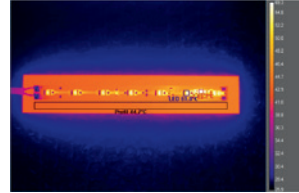
XOOCOVE is an efficient luminaire reaching 133 lm/W. This, in combination with the high lumen output and minimal form factor, makes it a premium cove solution.

LIGHTING INNOVATIONS

Tj Away®

LED LINEAR™ TECHNOLOGY

XOOCOVE embeds the LED Linear™ Tj Away® technology which provides optimal heat dissipation of the LED to the housing profile. This enables the miniaturization of the luminaire's footprint while ensuring an extended lifetime compared to conventional LED technologies.

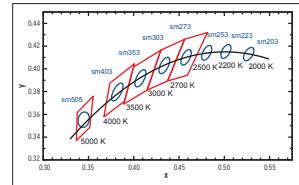


Experimental setup: 40 W/m (12 W/ft) LED tape with thin flexible PCB mounted on flat aluminum plate LED temperature does not exceed 60°C (140°F).



**ONE
BIN
ONLY**

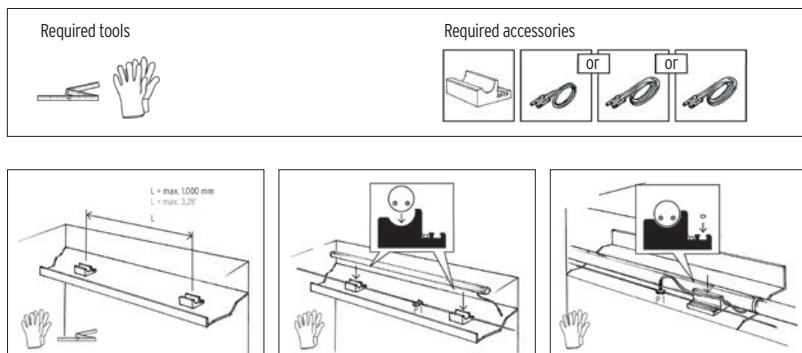
Color consistency plays a key role as much as homogeneity in any linear lighting application. To ensure an outstanding quality of the light, LED Linear™ introduced One Bin Only which ensures that all LEDs used in our luminaires are picked from one bin centered on the target CCT within a 3 step MacAdams Ellipse. They are used to determine visual color deviations and indicate differences in light color of individual LEDs. 3 step MacAdam ensures a color variation unnoticeable by the human eye and therefore an optimal lighting quality.



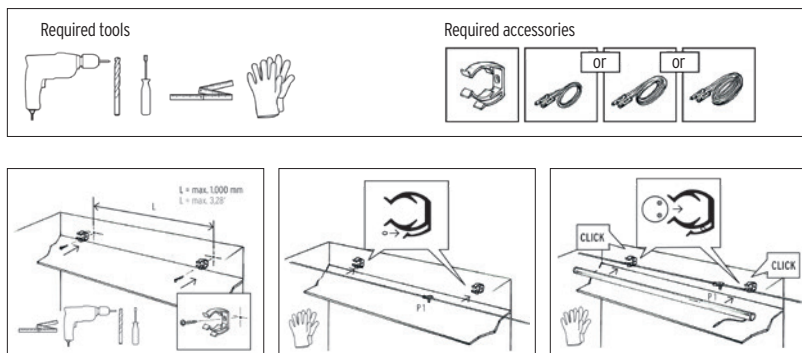
Black Body Curve —
LED Linear™ Binning —
ANSI Binning —

MOUNTING

Mounting pad

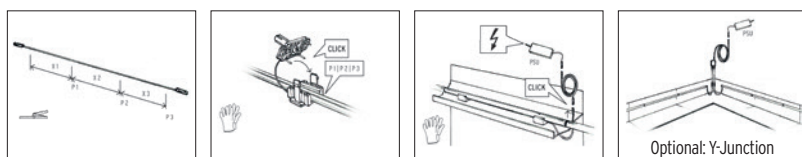


Vario clip



Mounting clips are easily attached in the cove, enabling surface mount.

General



REFERENCES



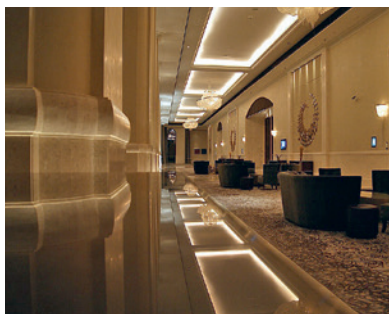
"Cove light creates an accent to interior details"



Indirect light highlights architectural details



Cove solutions are the perfect complement to general light



Remarkable effects by mirroring the cove in the ground

Please scan the QR Code for more
detailed information about
XOOCOVE IP40

